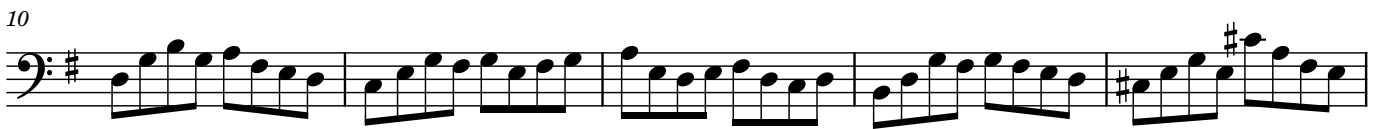


Suite in F Major  
for Bass Viola da Gamba

Stephen Wentworth Arndt

# Prélude

Stephen Wentworth Arndt



# Allemande

Stephen Wentworth Arndt


$\text{♩} = 110$



5



10



14



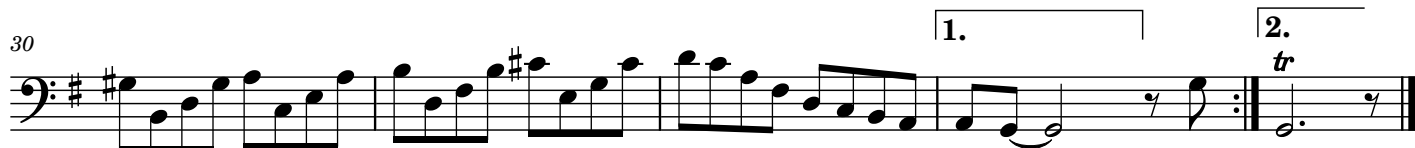
19



24



30



# Courante

Stephen Wentworth Arndt

$\text{♩} = 100$



# Minuets I & II

Stephen Wentworth Arndt

$\text{♩} = 90$

1. 2.

7

1. 2.

14

1. 2. Fine

20

26

1. 2.

33

1. 2. D.C. al Fine

# Sarabande

Stephen Wentworth Arndt

$\text{♩} = 76$

Musical notation for the first staff, starting with a treble clef, key signature of one sharp (F#), and 3/4 time signature. The staff contains the first six measures of the piece, including a repeat sign at the beginning.

7

Musical notation for the second staff, starting with a treble clef, key signature of one sharp (F#), and 3/4 time signature. The staff contains measures 7 through 13.

14

Musical notation for the third staff, starting with a treble clef, key signature of one sharp (F#), and 3/4 time signature. The staff contains measures 14 through 20, featuring first and second endings.

21

Musical notation for the fourth staff, starting with a treble clef, key signature of one sharp (F#), and 3/4 time signature. The staff contains measures 21 through 27.

28

Musical notation for the fifth staff, starting with a treble clef, key signature of one sharp (F#), and 3/4 time signature. The staff contains measures 28 through 34, featuring first and second endings.

# Bourée

Stephen Wentworth Arndt

$\text{♩} = 110$



5



10



15



20



25



30



# Gigue

Stephen Wentworth Arndt

♩. = 76



8



14



21



28

