

Suite in F Major
for Bass Viola da Gamba

Stephen Wentworth Arndt

Prélude

Stephen Wentworth Arndt

♩ = 100



Allemande

Stephen Wentworth Arndt

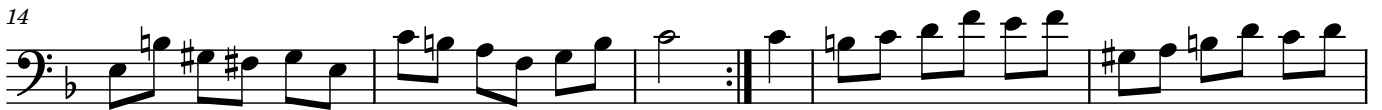
$\text{♩} = 100$



Courante

Stephen Wentworth Arndt

♩ = 120



Bourée

Stephen Wentworth Arndt

♩ = 110



6



12



18



23



28



Sarabande

Stephen Wentworth Arndt

$\text{♩} = 76$

First staff of music, measures 1-7.

8

Second staff of music, measures 8-15.

16

Third staff of music, measures 16-22.

23

Fourth staff of music, measures 23-28.

29

Fifth staff of music, measures 29-35.

Minuet

Stephen Wentworth Arndt

$\text{♩} = 100$

The first system of the Minuet consists of seven measures of music in bass clef, 3/4 time, and B-flat major. It begins with a quarter note G2, followed by eighth notes A2-B2, C3-B2, A2-G2, and a quarter note F2. The melody continues with eighth notes G2-A2, B2-A2, G2-F2, and a quarter note E2. The piece concludes with eighth notes D2-E2, F2-E2, D2-C2, and a quarter note B1.

8

Fine

The second system of the Minuet consists of nine measures of music in bass clef, 3/4 time, and B-flat major. It begins with a quarter note G2, followed by eighth notes A2-B2, C3-B2, A2-G2, and a quarter note F2. The melody continues with eighth notes G2-A2, B2-A2, G2-F2, and a quarter note E2. The piece concludes with eighth notes D2-E2, F2-E2, D2-C2, and a quarter note B1.

17

The third system of the Minuet consists of ten measures of music in bass clef, 3/4 time, and B-flat major. It begins with a quarter note G2, followed by eighth notes A2-B2, C3-B2, A2-G2, and a quarter note F2. The melody continues with eighth notes G2-A2, B2-A2, G2-F2, and a quarter note E2. The piece concludes with eighth notes D2-E2, F2-E2, D2-C2, and a quarter note B1.

27

D.C. al Fine

The fourth system of the Minuet consists of four measures of music in bass clef, 3/4 time, and B-flat major. It begins with a quarter note G2, followed by eighth notes A2-B2, C3-B2, A2-G2, and a quarter note F2. The melody continues with eighth notes G2-A2, B2-A2, G2-F2, and a quarter note E2. The piece concludes with eighth notes D2-E2, F2-E2, D2-C2, and a quarter note B1.

Gigue

Stephen Wentworth Arndt

♩. = 76



8



15



22



28

